



# 2000 SERIES MICRO DIAPHRAGM PUMP

Lightweight. High-Performance. Energy-Efficient.

## Product Snapshot



Max flow: up to **1.15 L/min (0.04 cfm)**



Max vacuum: **24 inHg** (200 mbar abs)



Max pressure: **30 psig** (2 bar)



Motor options: **Brushed DC**



Operating voltage: **3.7 to 6.0 VDC**

## Key Features



### Ultra-lightweight:

0.8 oz (25 g) for compact integrations



### Strong & steady:

High-torque motor maintains suction



### Energy-efficient:

Draws under 1 W at full vacuum



### Compact footprint:

Fits in micro-engineering designs



### Customizable:

Flow, motor, ports, materials, etc.

## Technical Specifications

Parameter	Value
Max Flow	1.15 L/min (0.04 cfm)
Max Pressure	30 psig (2 bar)
Max Vacuum	24 inHg (200 mbar abs)
Operating Voltage	3.7 to 6.0 VDC
Max Current Draw	0.5 A
Ambient / Media Temperature	41° F to 104° F (5° C to 40° C)
Weight	0.8 oz (25 g)
Wetted Materials	PC, Neoprene, Silicone

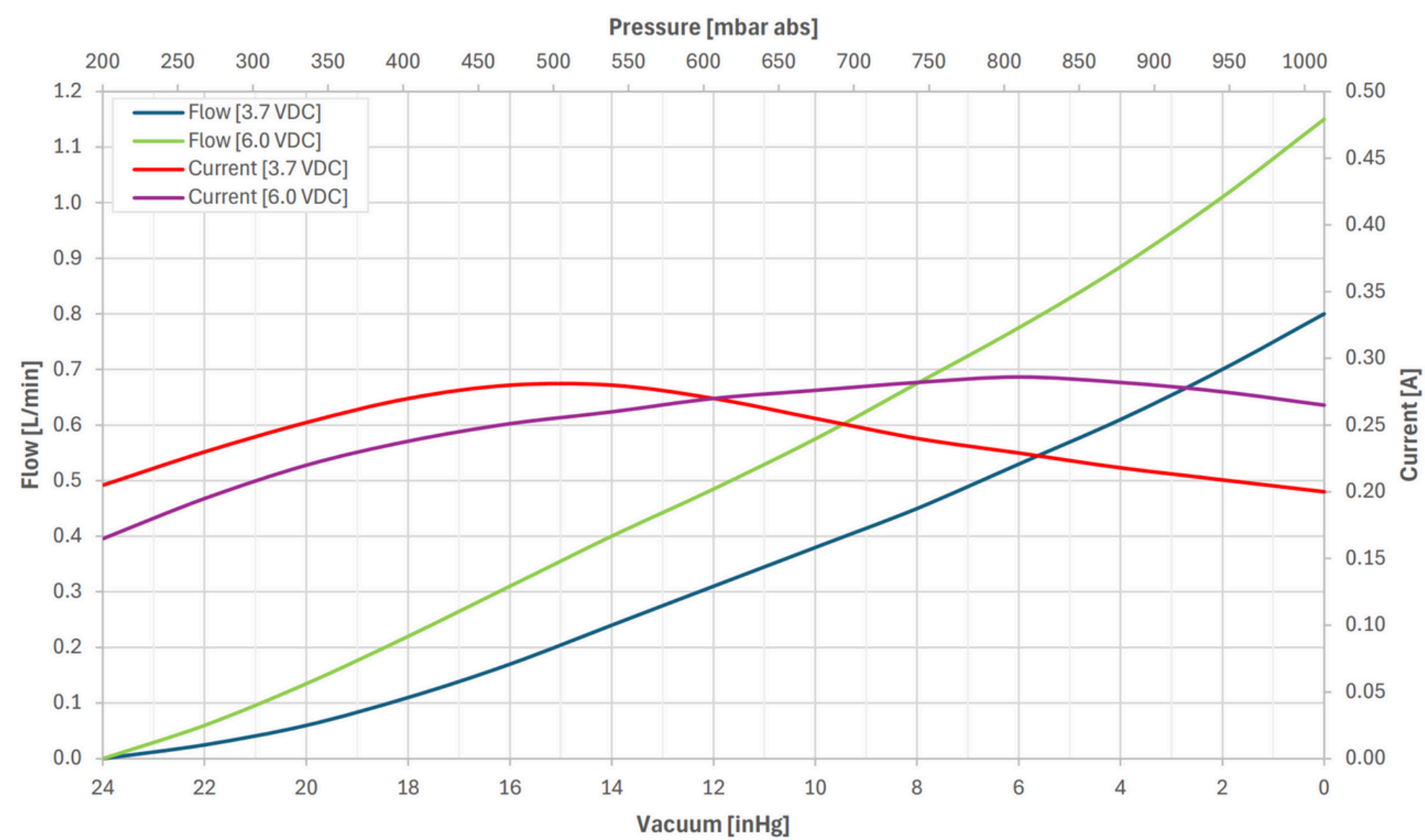


The **2000 Series** delivers high vacuum performance in an **ultra-compact, lightweight design**. These small yet powerful diaphragm pumps operate **efficiently with minimal power consumption**, making them ideal for **portable and battery-powered devices**. Fully customizable and suitable for both **vacuum and pressure applications**, they provide reliable, adaptable performance **across industries** where space, weight, and efficiency are critical.

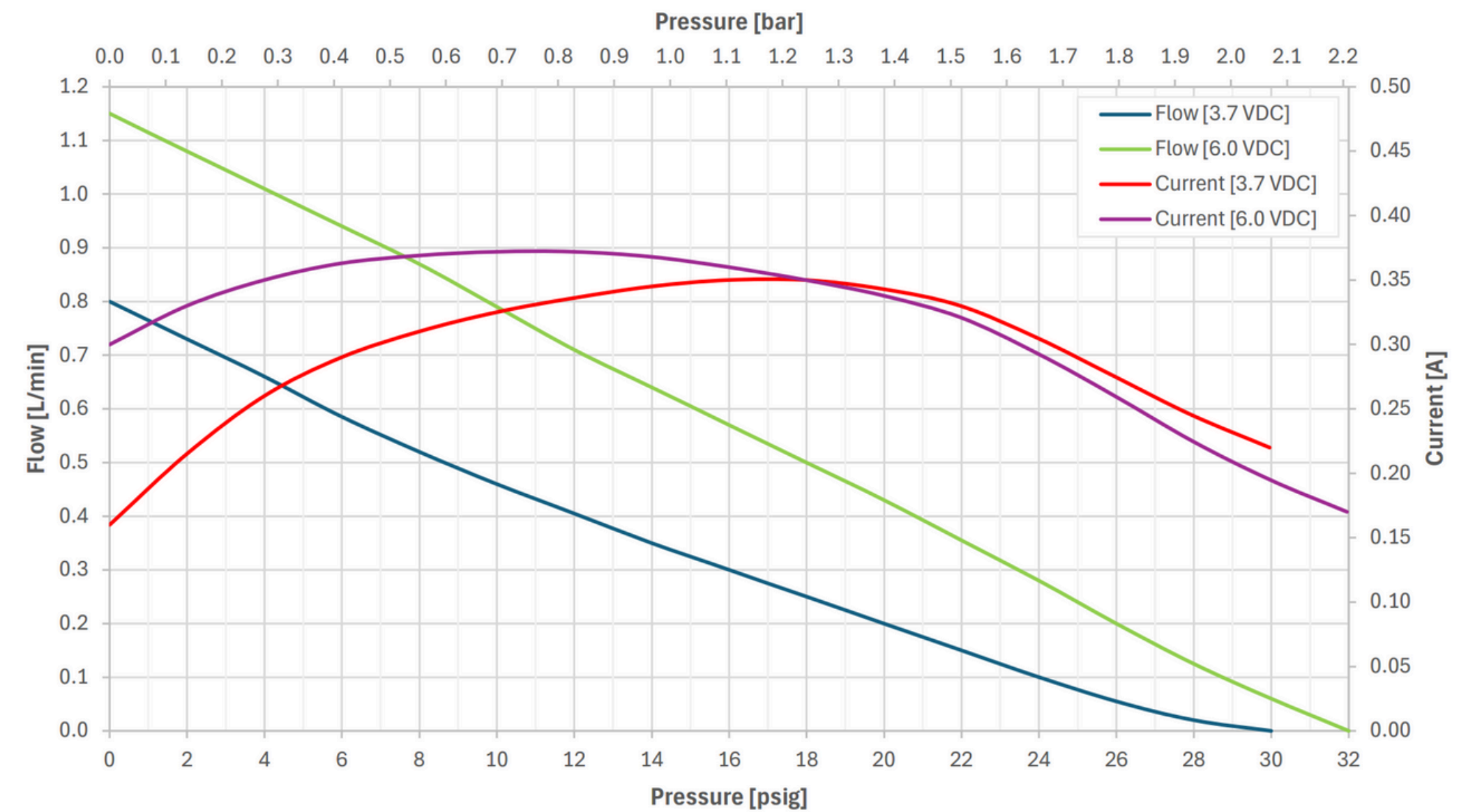
Lightweight. High-Performance. Energy-Efficient.

## Flow Curves

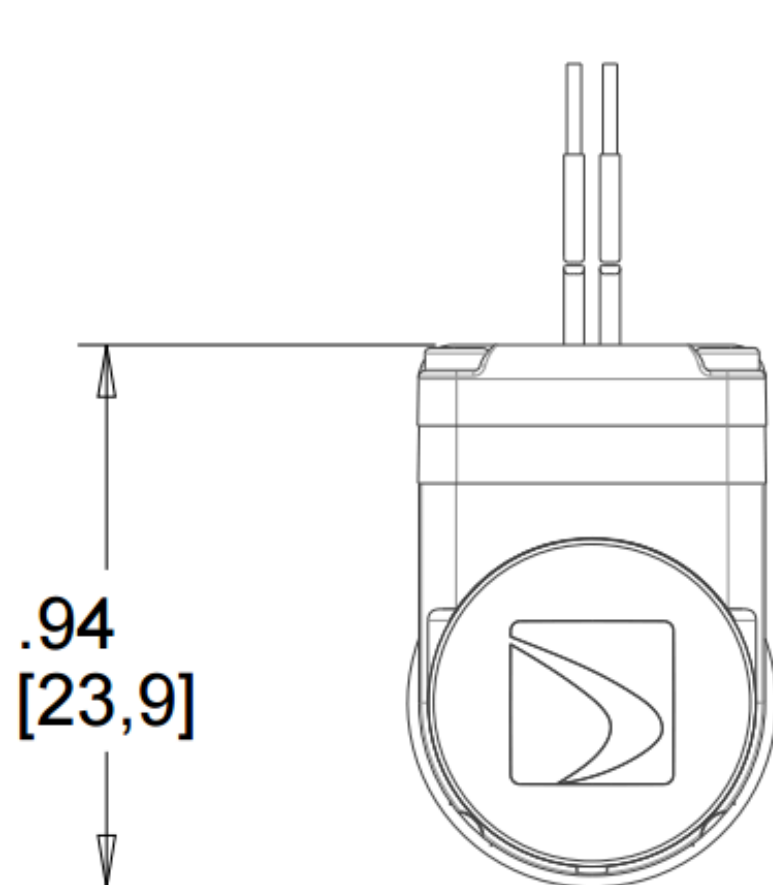
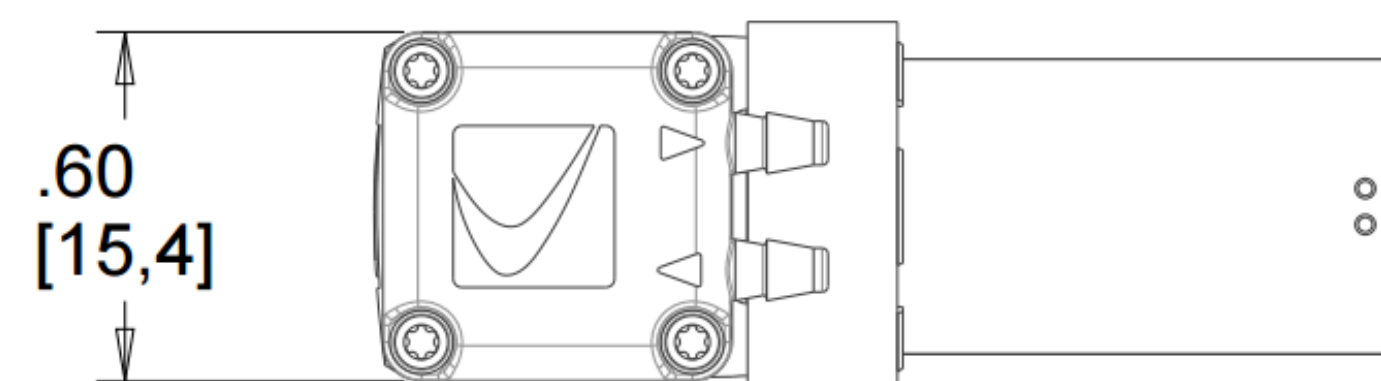
Vacuum, DD2102200



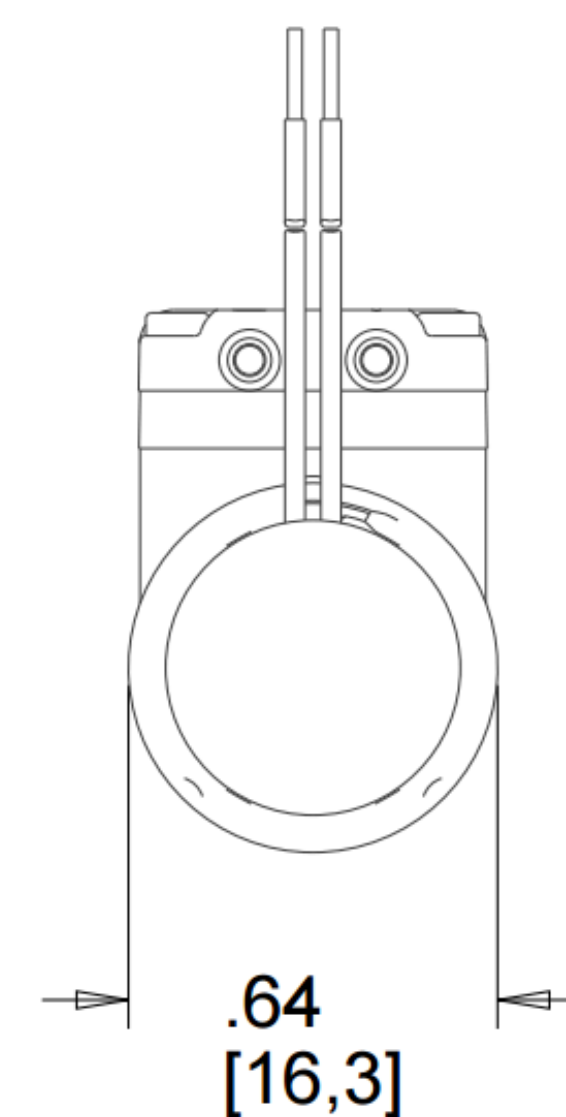
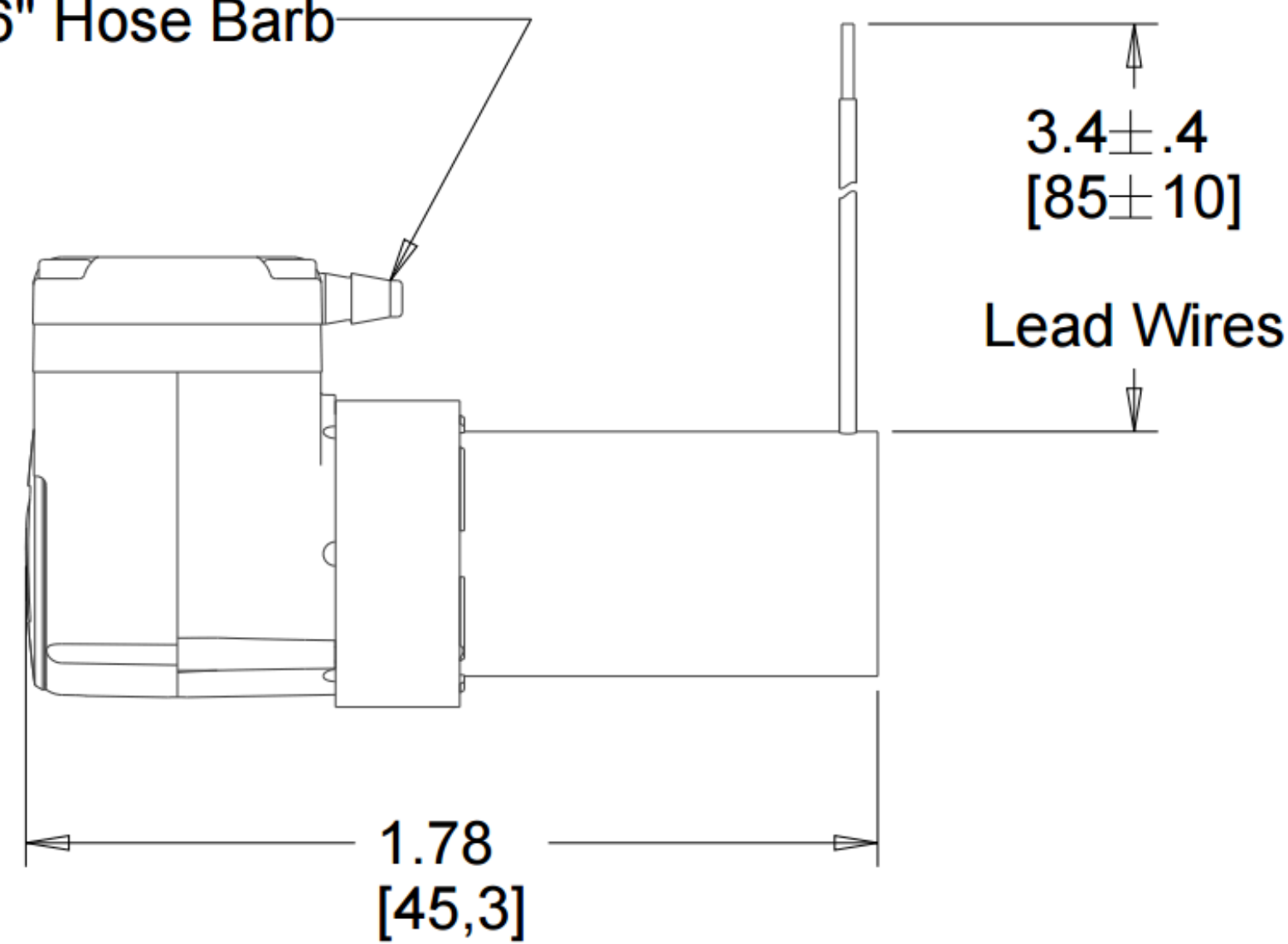
Pressure, DD2102200



## Dimensions

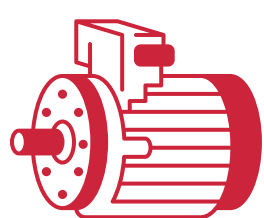


(2x) 1/16" Hose Barb

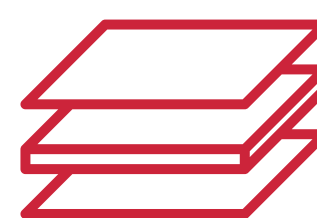


\* Dimensions are in inches [mm]. DD2102200 shown. 1.78 [45,3] dimension is motor selection dependent.

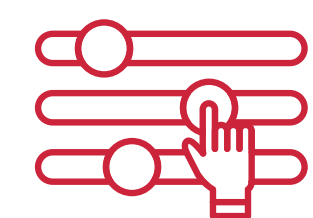
## Available Customizations



Motor types: Brushed DC



Valve and diaphragm materials



Optional eccentrics  
for flow/pressure tuning